



CAVALAIRE

— GOLFE DE SAINT-TROPEZ —



# DIVING DESTINATION CAVALAIRE





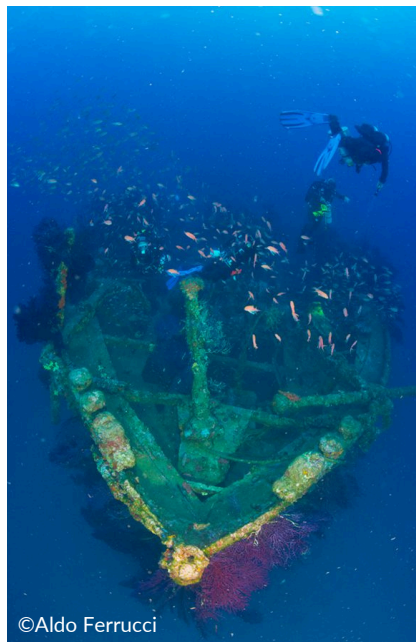
# EXCEPTIONAL WRECKS & DIVING SITES for unique experiences

## Le Togo

The remains of this 76 metre cargo ship from 1882 are a magnificent wreck ! A precursor to modern ships, its construction was innovative : steel, five watertight bulkheads, double hull.

### History of the wreck...

It had three masts and could be powered by sail or motor. The Havraise Péninsulaire company bought the ship and renamed it "Ville de Valence". In 1906; it was sold to the Becchi Lalagno company of Savona and sailed under the name "d'Armor". In 1912, it was renamed "Togo" after being acquired by the Genoese company Liva. The Togo initially transported fruit and then coal to supply the entire Mediterranean. On May 12th, 1918, it struck a 150kg mine left by the submarine UC35. It was cut in two and sank immediately. Fifty-nine years later, biologist and diver Richard Calmes found it: the Togo was lying flat on a gently sloping sandy bottom, its bow pointing towards Cavalaire beach. The wreck requires several dives: it is best to focus on the openings along the deck.



### Technical characteristics

- **Location** : West of pointe du Brouis in Cavalaire bay
- **Level of difficulty** : difficult
- **Diving**: from level 3
- **Remarks** : impracticable in Mistral winds



### Fauna & flora

The huge red gorgonian corals that have colonised the wreck can reach 1 metre in width, and are sometimes so dense that it is necessary to find another passageway to visit the ship's passageways! Fish: conger eels, anthias, damselfish and dentex. On the sand at the break, it is also possible to come across a sunfish...

# Le Ramon

Wreck located just outside the port of Cavalaire, where traffic is heavy during peak season. Resting on its starboard side, the Ramon lies on a muddy sandy bottom at a depth of 22 metres.

The wreck has been dismantled by divers and today it is very difficult to recognise anything. Only the port side has retained its hull. What was once the deck is now nothing more than tangled scrap metal and sheet metal. There are openings on the port side, but these are very narrow and, given the layer of sediment present on the site, it is strongly advised not to venture inside.

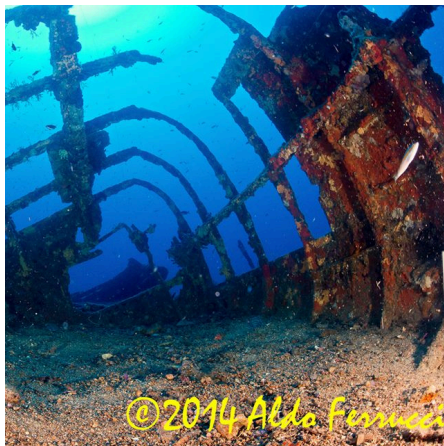
## History of the wreck...

Built in 1873 by Gilbert and Cooper Shipyard (Hull), the ship was named Elguezabal, Ballestreros No. 2, then Derwent and finally Ramon Meumbru. The Ramon was 80 metres long and 11 metres wide. Its tonnage was 1,153 tonnes. It had a feature that was exceptional for the time: it was equipped with five watertight bulkheads.

The causes and exact date of the sinking are uncertain. It is believed to have sunk in early June 1921 following an explosion. The crew of 37 men was rescued by the steamship Cabo Vilano.

# L'Espingole

The Espingole, located in Cavalaire bay near Togo, is a destroyer dating from 1900.



## History of the wreck...

Built in 1900, it took part in several expeditions, notably to Turkey, Rochefort and Toulon. On February 4, 1903, while manoeuvring, it struck the Taillat shoal and ran aground. After being lightened and towed one kilometre to Cavalaire, the Espingole sank. An attempt was made to refloat it by sliding a chain under the hull, but this was unsuccessful.

## Fauna & flora

Countless multicoloured sponges have taken over the metal hull, giving it a magnificent purple colour in the glow of the headlights. The fauna is abundant: groupers, snappers, schools of apogonidae, conger eels, but also crustaceans such as lobsters, squat lobsters and rock lobsters.

- **Location** : 400m from Cap Andati in Cavalaire bay
- **Difficulty level** : medium
- **Diving** : 40m with a supervised diver
- **Comments** : it is possible to enter the wreck



- **Location** : at the exit of Port Cavalaire
- **Difficulty level** : Easy
- **Diving** : from level 1
- **Remarks** : Shallow depth, constant danger from passing boats



# Le Torpilleur 178

- **Difficulty level** : difficult
- **Diving** : from level 3
- **Remarks** : Difficult access due to its depth and lack of markings

Between the late 19th and early 20th centuries, hundreds of small vessels with disproportionately large engines were used by navies around the world. French torpedo boats were so numerous that they were identified solely by a number. Torpedo Boat 178 was one of them.

## History of the wreck...

It was 35 metres long and only 3.50 metres wide. It could reach speeds of up to 23 knots. Launched in 1893 at the Forges et Chantiers de Méditerranée shipyard in Granville, it was assigned to the Mobile Defence Force in Toulon from 1893 to 1897, then to that of Bizerte. In 1900, it returned to Toulon, where it was decommissioned and struck from the register in November 1910. However, it remained afloat under the name Las and served as an annex to the school for torpedo electricians until 1919.

It ended its career as a target in Cavalaire harbour, where it was finally sunk in November 1921. The boiler and machinery had been removed beforehand. The wreck is broken up into four sections, which are more or less intact but interspersed with collapsed parts.

## Fauna & flora

The wreck lies on a bed of sand and gravel. There is little marine life, but its metal plates are well covered with orange encrusting sponges and yellow tube sponges. There are also a few lobsters, capons and a school of anthias.



©sportnature.var.fr



©varprovence-cruise.com

# Le Traffic

## Technical characteristics

- **Difficulty** : Difficult
- **Diving** : Level 3
- **Remarks** : Very technical due to strong currents.

## History of the wreck...

The wreck is located on a very steep sandy slope. Expect a highly technical dive due to strong currents, a small diving area and significant depths. Few marine creatures have colonised the wreck...

A small cargo ship approximately 35 to 40 metres long, of Norwegian origin. A mixed sailing ship with a steam engine.

A mysterious shipwreck. The circumstances surrounding its sinking remain a mystery. Was it a deliberate shipwreck? Could it have collided with a mine? Why is the hold locked? What does it contain? The wreck was reportedly discovered by a coral diver, but he only officially reported it in 1997, when clubs along the coast began to visit it.

# Le Prophète

The Prophète was a small French cargo ship, powered by both steam and sail, measuring 42 metres long and 7 metres wide. Its wreck lies at a depth of 34 metres. The most interesting feature is its propulsion system: a boiler in good condition, which crushes the rest of the wreckage with its weight, and an enormous flywheel. In the centre of the ship, the whole thing is impressive: divers call the wreck "the boilers".

## History of the wreck...

The Prophète was unique in that it was one of the first French ships in the Mediterranean to be propelled by a propeller. It was also rigged with sails for auxiliary propulsion.

On March 26, 1860, the Prophète, commanded by Captain Cotton, was approaching the coast of Provence from Philippeville when it was caught in a violent storm. The cautious captain decided to seek shelter for two days and resumed his journey when the weather calmed down. As he rounded Cap Lardier, a leak developed in the hold. There were no casualties in the shipwreck.

- **Difficulty level** : medium

- **Diving** : from 40m supervised diver

- **Remarks** : Visit this wreck when the sea is calm as it is not sheltered and there are currents.



© Stéphan Le Gallais

# Le Rubis

## Technical characteristics

- **Difficulty level** : Difficult

- **Diving** : from level 2

- **Remarks** : . Very frequent currents, sometimes violent.

A must-see dive in the Mediterranean. The Rubis was a mine-laying submarine launched in Toulon in 1931. Measuring 66 metres long, 7 metres wide and 8 metres high, it could lay up to 32 mines. The wreck lies at a depth of 40 metres on a sandy seabed. The submarine is very well preserved and its upright position on its keel gives the impression that it is ready to set sail.

It is not advisable to venture inside the submarine, but you can admire the interior through some open airlocks or from the upper deck, where the floor has disappeared. You can still see the instruments, machinery and torpedo launchers. An abundance of wildlife, including groupers, conger eels and moray eels, will accompany you on this exceptional visit.



@Cécilia Ceribelli



© Stéphan Le Gallais

## Dukw & Dukw 2

### Technical characteristics

- **Difficulty level** : easy
- **Diving** : Level 1
- **Remarks** : easily accessible as it is shallow

Dive down to the wrecks of two GMC Dukw amphibious vehicles lying on a muddy seabed. These military vehicles were used by the US Army during the Second World War during the 1944 landings in Italy, Provence, North Africa, Normandy and the Pacific.

### History of the wreck...

The GMC DUKW 353 dates back to 1941. The American government needed vehicles capable of crossing rivers and shuttling between boats and land in the absence of ports in order to unload goods, ammunition, weapons and sometimes personnel. Thanks to its six-wheel drive and steel propeller, this type of vehicle is specially designed to cross rivers and enter the sea to supply ships with goods and weapons when they cannot approach the coast. The GMC DUKW can carry 2.4 tonnes of equipment or 25 heavily equipped men.

## La grande quairolle

The top of the rock is 18 metres deep. Be sure to explore the large fault that runs through the rock; conger eels, moray eels and groupers await you there. At the foot of the rock, you will find sand at a depth of 35 metres. Here, you can enjoy two completely different dives depending on the sunlight: explore the east side in the morning, which is a paradise for groupians.

In the afternoon, visit the west side, where you will discover magnificent overhangs covered with sea mimosas. In spring, many sea turtles come ashore. In summer, look up: barracudas are regular visitors here, guaranteeing thrills!

### Technical characteristics

- **Difficulty level** : medium
- **Diving** : from 40m supervised diver
- **Remarks** : drop-off, rocks and sand, up to 35m deep



©sportnature.var.fr

# La Calanque de la Cron

The Calanque de la Cron is located right next to Cap de la Vigie and is only accessible by sea.

The water is pure and clear. This is why divers particularly love this spot. The only downside is that to enjoy this picture-postcard location, it is advisable to go in the morning, as in the afternoon the sun will no longer be shining due to the high surrounding cliffs. For divers, the site is sheltered from the wind and the current is weak, which is ideal for beginners.



## Technical characteristics

- **Difficulty level** : easy
- **Diving** : beginner
- **Remarks** : Shallow and sheltered from the wind. Depth : 1 to 10 metres

# Le petit et le moyen Sec



## Technical characteristics

- **Difficulty** : easy
- **Diving** : from level 1
- **Remarks** : Few currents

The Petit Sec dive site is located at the tip of Cap Lardier. It is a rock that skims the surface of the water but extends to a depth of around 20 metres. Divers particularly love this spot for its flora and fauna. It is home to a beautiful variety of fish all year round (wrasse, grouper, moray eels, etc.). The Moyen Sec drop-off is a short distance from Lardier and descends to a depth of 30 metres.

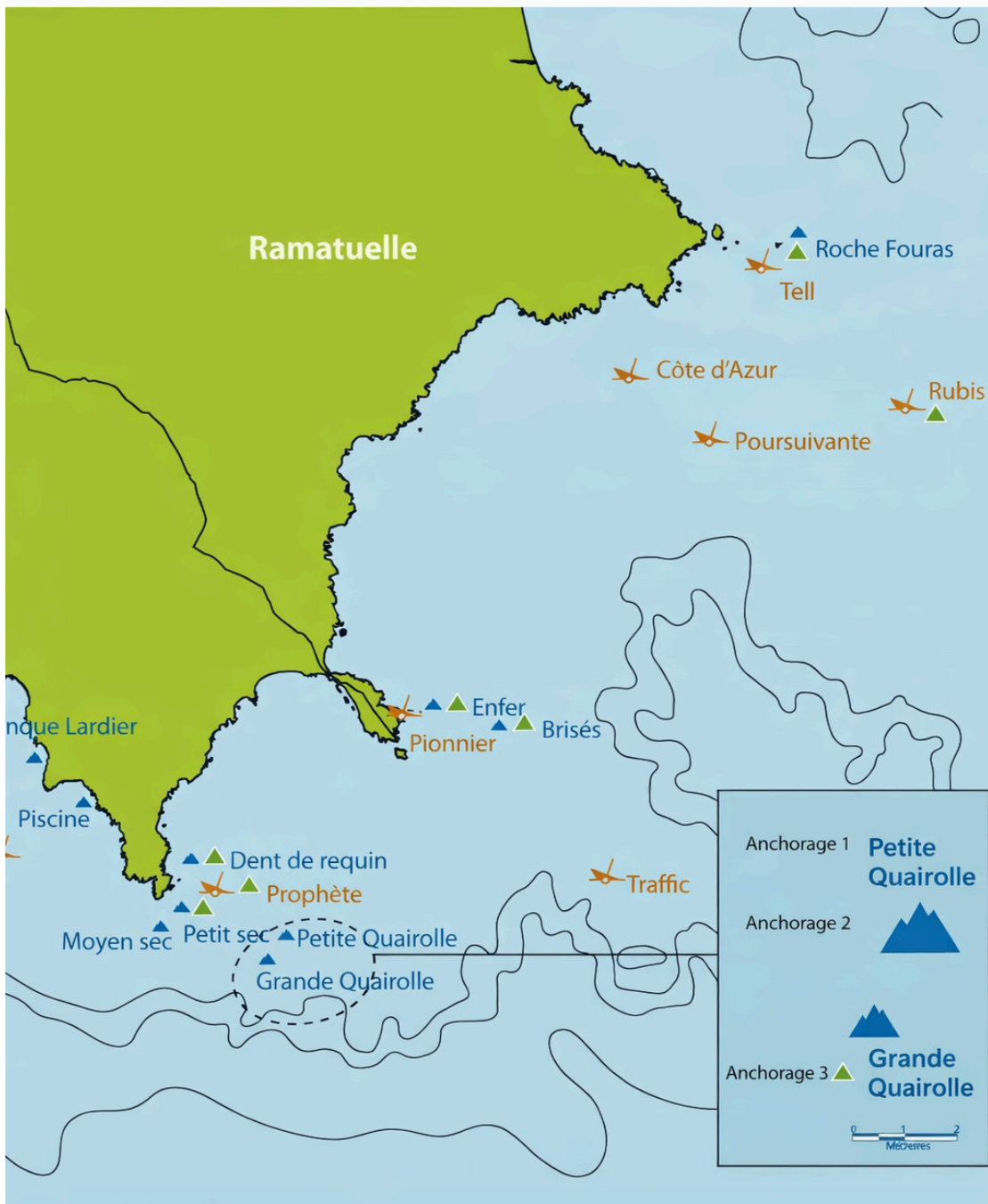
Here you will easily encounter all kinds of fauna typical of the Mediterranean, such as sars and conger eels. In addition to diving, you will also have the opportunity to try your hand at underwater photography during an exploration dive. Experienced and trained divers can also come and practise free diving.



## MAP OF WRECKS AND DIVING SITES AROUND CAVALAIRE

With its numerous shipwrecks and exceptional natural sites, Cavalaire is a favourite destination for divers.

The diversity and quality of these underwater treasures are sure to captivate you !



-  Natural sites
-  Shipwrecks
-  Facilities



# DIVING PROFESSIONALS

## for incredible discoveries



Quay Marc Pajot, near the Harbour  
Master's Office  
**Phone** : +33 6 78 13 35 03  
**Email** : eaubleue@plongeecavaulaire.com  
**Site** : www.plongeecavaulaire.com  
**Boat** : 11-metre rigid-hulled speedboat,  
capacity for 13 divers.



Opposite the Maison de la Mer  
**Phone** : +33 6 09 75 62 17  
**Email** : eperlan83@orange.fr  
**Site** : www.eperlanplongee.com

Aboard the MAEVA, a comfortable 11-metre speedboat, Gwenaël HANOUT, E4, DEJEPS, SDI/TDI Instructor Trainer, will take you to discover the most beautiful underwater sites between Saint-Tropez and the îles d'Or. We offer all recreational and technical training courses, from beginner to instructor level. Training for all levels, Nitrox, Trimix, Rebreather. Nitrox and Trimix filling station. Open all year round. Capacity for 11 divers.

L'Eperlan, a diving centre and school located in Cavalaire-sur-Mer, the second most popular diving site in the Mediterranean, has an aluminium boat that can accommodate up to 36 divers. Whether sunbathing on the roof in fine weather or sheltered from the elements in the off-season, the Eperlan II is fully equipped to meet your needs. It has racks for tanks, comfortable benches, raised nets to keep your belongings dry, bars for hanging your wetsuits, and a hot water shower. Introductory dives, children's diving, training courses, group bookings: we offer something for all levels. Whether you are a beginner or an experienced diver, come and enjoy a relaxing and safe diving experience. From the Hyères Islands to the waters of Cap Camarat, you can enjoy our many diving sites. L'Eperlan also has a filling station open all year round offering nitrox.



The harbour residences  
**Phone** : +33 6 08 43 10 98  
+33 4 94 12 71 33  
**Email** : info@miopalmoplongee.com  
**Site** : www.miopalmoplongee.com  
**Boat** : Yellow speedboat, capacity of 20  
divers. Then the Roberto, capacity of 30  
divers.



## Mio Palmo

Professional diving centre in Cavalaire since 1999. PADI 5-star CDC centre, the highest qualification for a PADI diving centre. PADI is the world leader in scuba diving. We offer the following activities: introduction to diving, PADI diving school for all levels, exploration dives for certified divers, and trips for everyone to Port Cros National Park. We are also a PADI professional training centre for Dive Master to IDC Staff Instructor courses, which are available as full immersion stays or internships. Our two boats are covered aluminium speedboats equipped for diving, measuring 9.3 m for the Mio Palmo and 12 m for the Roberto.

# Tiki Dive



Q04 Quai Matrice Martin  
**Phone** : +33 6 73 24 16 55  
**Email** : [contact@tiki-dive.com](mailto:contact@tiki-dive.com)  
**Site** : [www.tiki-dive.com](http://www.tiki-dive.com)  
**Boat** : 15.80m Trawler King Yacht,  
capacity: 11 divers



Discover an unforgettable diving experience with Tiki Dive to explore the fascinating shipwrecks and seabed of Cavalaire Bay and Port Cros National Park.

Tiki Dive will accompany you on this underwater adventure for an exciting half-day, a full day with a delicious meal at the table, or a stay on board for total immersion.

You can also relax on the SUN DECK or take advantage of the snorkelling equipment to have fun around the boat. You decide the programme!

Tiki Dive has 4 double cabins so you can enjoy your stay on board to the full. Interior saloon with fully equipped kitchen, easy launch from the platform & hot shower on exit, no tedious transport of equipment!

Whether you are a novice or an experienced diver, join us to explore the treasures of Cavalaire Bay and enjoy an exceptional and unforgettable diving experience.

Discoveries, explorations, FFESSM or SSI training, holidays, events. Open all year round. Capacity for 11 divers.

# Le Sarazin

Diving with the Sarazin in Cavalaire is reserved exclusively for rebreathers, with very few exceptions.

Silvia and Aldo will accompany you on your discovery of the wrecks and drop-offs of Cavalaire-sur-Mer.

Trips are tailored as much as possible to the needs of divers or CCR courses.

Six to eight guests on board. The boat is equipped with a lift for returning on board.



Opposite the Maison de la Mer  
**Phone** : +33 6 2911216  
**Email** : [aldoferruccidive@gmail.com](mailto:aldoferruccidive@gmail.com)

Aldo offers you his experience in the sector and spare parts for many devices, to guarantee you safe and enjoyable dives.

Silvia welcomes you on board, paying particular attention to every detail as well as to your well-being and cleanliness on board.

Air, nitrox and trimix fills, absorbent material for rebreathers, rebreather tanks and BCDs with regulators are available for hire. Courses in rEvo, Shark, JJ-CCR, Triton, T-reb, Liberty backmount and sidemount rebreathers, and CCR O2 Salamanders for divers and instructors of all levels.

Dive sites from 10 to 120 metres, with wrecks, shoals and shallows, full of benthic and pelagic life, most of them just a few dozen minutes away by boat.

CAVALAIRE

— GOLFE DE SAINT TROPEZ —

# Festival *Passion* Méditerranée

SEPTEMBER 11<sup>th</sup> TO 13<sup>th</sup>, 2026

DIVING & WATER SPORTS INITIATIONS  
EXHIBITIONS – CONFERENCES  
SHOPPING VILLAGE  
EQUIPMENT TESTS  
ENTERTAINMENTS

FRANCE  
STATION  
NAUTIQUE  
★★★★★  
Cavalaire  
sur Mer

OFFICE DE TOURISME DE CAVALAIRE  
04 94 01 92 10  
WWW.CAVALAIRESURMER.FR

